



MARS Panels with *CLIMAPLUS* Superior Performance/
 DONN DX® Suspension System

ESD Information

Recycled Content: 76%
CLIMAPLUS Superior Performance for Mould/Mildew

★ Contributes to Green Star points ✓ ESD additional advantages

IEQ						Ene	Mat
Increase Daylight Levels	Reduce Lighting Levels	Internal Noise Level Reduction	Low Volatile Organic Compounds	Low Formaldehyde	Mould Prevention	Lighting Density Reduction	Design for Disassembly
★	★	★	✓	✓	✓	★	✓

Advantages

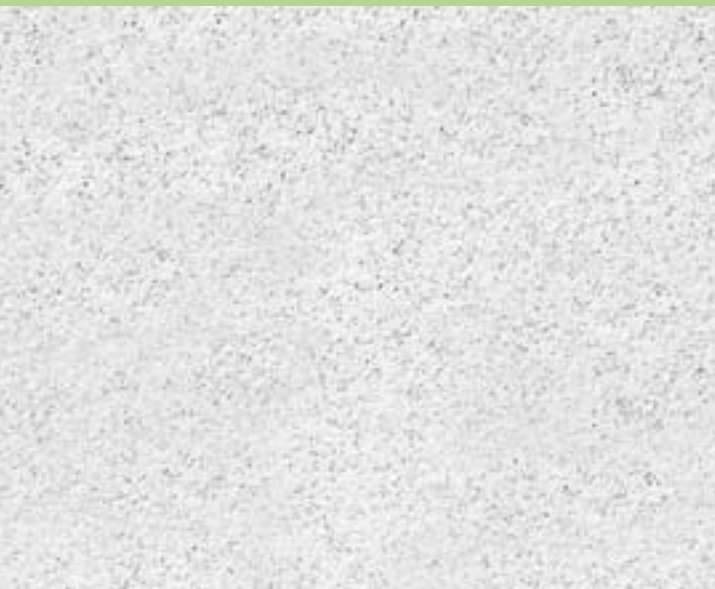
- Fine, monolithic texture.
- High light reflectance (LR .89).
- Excellent noise reduction (NRC .75).
- Durable, scratch-resistant, cleanable surface.
- Low maintenance panels look like new for years to come.
- *CLIMAPLUS* 30-year lifetime system warranty to withstand conditions up to 40°C/95% relative humidity without visible sag when used with a DONN® brand suspension system.

Applications

- Open-plan offices
- Corridors
- Department stores
- Offices with indirect lighting
- Reception areas and lobbies
- Restaurants

Substrate

- X-Technology mineral fibre



Fine-textured panel

Grid Options

DONN DX 24mm



DONN Certricitée 15mm



30

Year System Warranty
 - No visible sag
 - Mould/mildew protection

MARS CLIMAPLUS Panels

Edge	Panel Size ^{1,2}	Class	Item No	NRC ³	CAC ³	LR ⁴	Colour	Grid Options	VOC Emissions	Anti-Mould & Mildew ⁵	Recycled Content	
	600 x 600 x 19mm	Class A	ME86185	.70-.80	35-39	.89	White	A, C	Low		76%	
	1200 x 600 x 19mm	Class A	ME88185	.70-.80	35-39	.89	White	A, C	Low		76%	
		600 x 600 x 19mm	Class A	ME86785	.75-.85 ϕ	35-39	.89	White	B	Low		76%
		1200 x 600 x 19mm	Class A	ME88785	.75-.85 ϕ	35-39	.89	White	B	Low		76%
		600 x 600 x 19mm	Class A	ME86985	.70-.80	35-39	.89	White	D	Low		76%
		1200 x 600 x 19mm	Class A	ME88985	.70-.80	35-39	.89	White	D	Low		76%

Legend

Ø SAC 0.9 (500-4000 Hz speech range)

Low Emissions (VOC Class)

Classified as low-emitting per standards established by the Collaborative for High-Performance Schools (CHPS), following California Specification 01350 testing methods. Low-emitting is defined as having less than 13.5 ppb.

CLIMAPLUS Superior Performance

Contains a broad-spectrum antimicrobial treatment on the face and back of the panel that provides guaranteed resistance against the growth of mould/mildew.

A	B	C	D
DX®	DX	Centricitee DXT	Centricitee DXT

Grid Profile Options

Physical Data/ Footnotes

Weight
4.7 kg/m²

Environmental Limitations
40°C, 95% RH max.

Thermal Resistance
R 0.39 °C/W

Maximum Backloading
0 kg/m²

Maintenance
Can be cleaned easily with a soft brush or vacuum

Early Fire Performance

Index	Ignitability	Spread of Flame	Heat Evolved	Smoke Developed
AS/NZS 1530.3	0	0	0	3
ASTM E84	-	25	-	50
AS/NZS 3837	Group 1 – unsprinklered			

Scrubability
Using the Gardner Scrubbability Test, 150 scrub cycles without surface break (ASTM D2486).

Patented technology
This product's unique combination of sag resistance and sound performance results from a technology covered by U.S. Patent No. 5,250,153.

Footnotes

- Not all panel sizes available in all geographic areas
- Some imperial sizes available to order
- Acoustic Test Standards NRC to ASTM C423 CAC to ASTM E1414
- LR values are shown as averages
- Panel face and back surfaces treated with a patented, broad-spectrum antimicrobial standard formulation that inhibits and retards the growth of mould/mildew.
- Trademarks used herein belong to USG Interiors, Inc or a related company

Safety First!
Follow good safety and industrial hygiene practices during handling and installing of all products and systems. Take necessary personal precautions and wear the appropriate personal protective equipment as needed. Read material safety data sheets and related literature on products before specification and/or installation.



green building council australia
MEMBER



USG Australasia

Queensland
 Phone: (07) 3852 5937
 Fax: 1800 786-946 (free fax)

New South Wales
 (02) 8850 3935
 1800 786-946 (free fax)

Victoria
 (03) 9639 0900
 1800 786-946 (free fax)

Auckland Head Office
 (09) 636 3680
 (09) 636 3679

Wellington
 (04) 560 4528
 (04) 560 4529

M/1-09